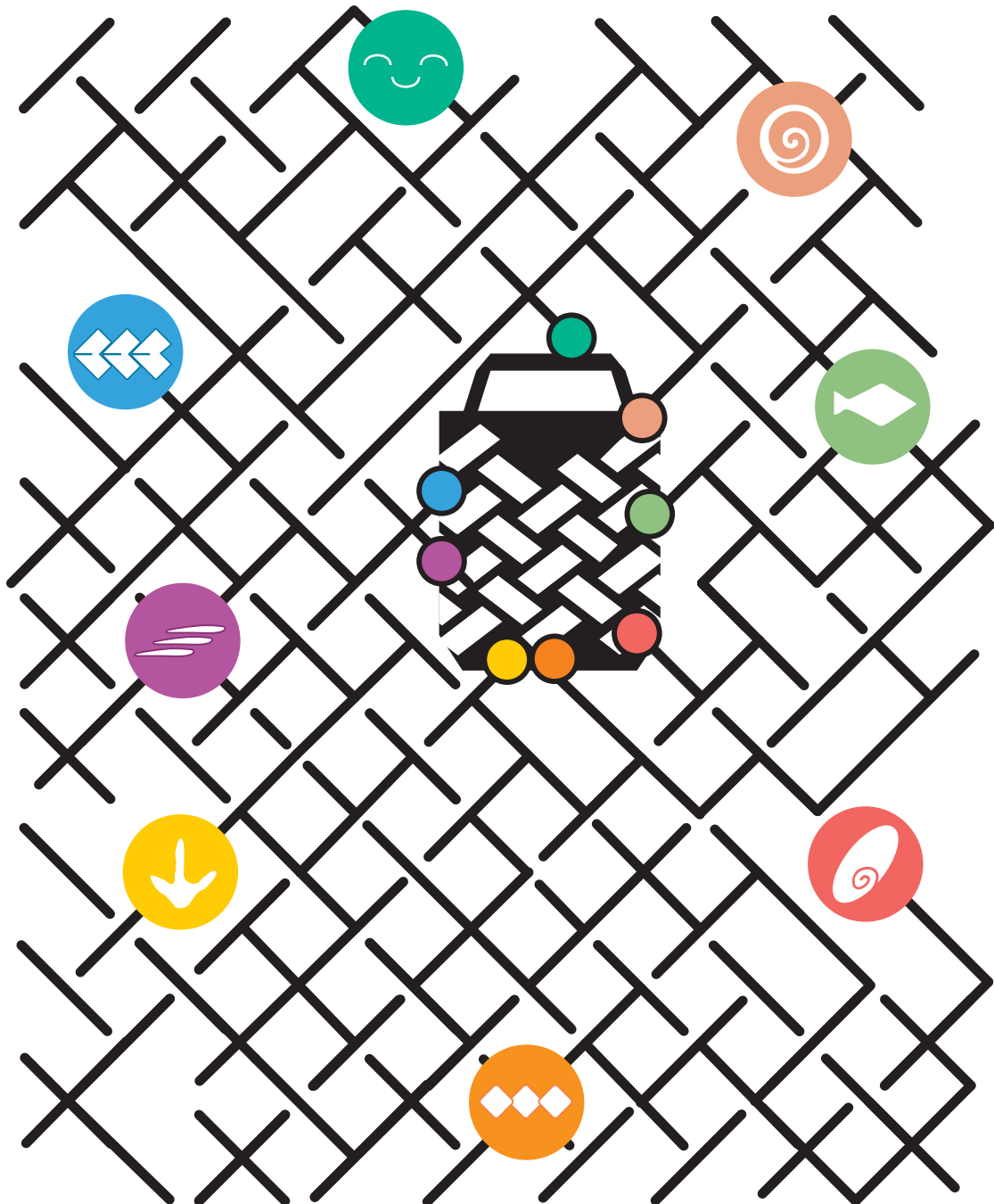


Can you put your catch in your kete?

Can you follow the maze to catch your creatures and put them in your kete?



How many did you catch?

- | | | | |
|--------|-------|---------|--------|
| 1 Tahi | 2 Rua | 3 Toru | 4 Whā |
| 5 Rima | 6 Ono | 7 Whitu | 8 Waru |