



How the community built the Caroline Bay Playground





A brief was written to instruct the playground designers

Cplay volunteers talked and listened to lots of people to find out what they wanted and needed.



People included; Mana whenua, community groups, businesses, experts and advocates; health, disability, education, families, sports, aged care, early childhood, service clubs, art and history and heaps of kids!





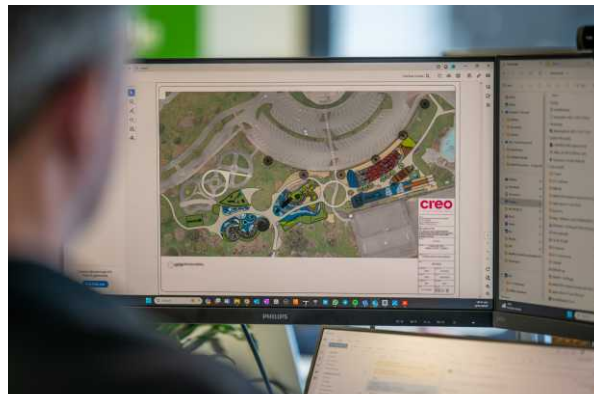
The playground designers shared their ideas as design concepts

Cplay helped develop the ideas to make sure the playground would be fun, inclusive, challenging and meaningful



We chose play equipment that would help people move their bodies in lots of different ways, help people have fun, play together and offer some challenge. We choose some items from catalogues, and created new things too.

Playing, is one of the most important things we can do together... So let's:



Have fun

- feel good self-esteem
- foster relationships
- connect to our past
- share stories

All play together

- better access
- sensory play
- many ways to communicate
- range of abilities

Challenge ourselves

- strengthen bodies
- develop skills
- stimulate creativity
- grow minds

Make play meaningful

For stronger and healthier bodies. Smarter and happier minds.



Cplay made a list of what they wanted to buy and worked out how much money was needed.

Here's some of the equipment Cplay chose to help people move in lots of different ways



PLAY & HEAR MUSIC



TALK & LISTEN



JUMP



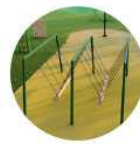
BALANCE



BOUNCE & JUMP



CRAWL



SWAY



SWING



CLIMB



ROCK



SLIDE



RUN, SCALE, JUMP, HANG, GRIP, CLIMB, & ASCEND



SPIN



PLAY GAMES



Cplay made a list of what they wanted to buy and worked out how much money was needed.

Here's some of the equipment Cplay chose to help people move in lots of different ways





They designed special items to share local stories and history of our place and people.

Cplay chose a shipwreck, lighthouse slide tower, mahika kai whare, and themed the flying fox, obstical course, swings and tuna eel areas.





*They fundraised
for equipment,
earth works,
and surfacing.*

*Lots of people in our community
and nationally gave money and
time to us so we could
pay for everything*





Security fences were put up, and the old equipment was removed

The equipment went back to the council and some was kept to bring back





Earth movers prepared the site

They scraped off the top soil, trucked away the sand to recycle. Brought in rocks and earth, compacted it flat, and built mounds and paths.





The equipment was ordered and made in Germany and New Zealand

Lots of people helped make the equipment. We used quality materials so it would last longer and need less maintenance





The equipment arrived and was installed

Sometimes they built a little bit of the mound first, installed the foundations and equipment and then finished building the mound.





Big equipment was lifted into position

Large and small trucks and cranes helped deliver and lift in the big things, like the ship, lighthouse mouse wheel, and whare.





The safety surface was laid so we could have challenging equipment.

They used recycled rubber from tires, even the old playground rubber was chopped up and re-used.





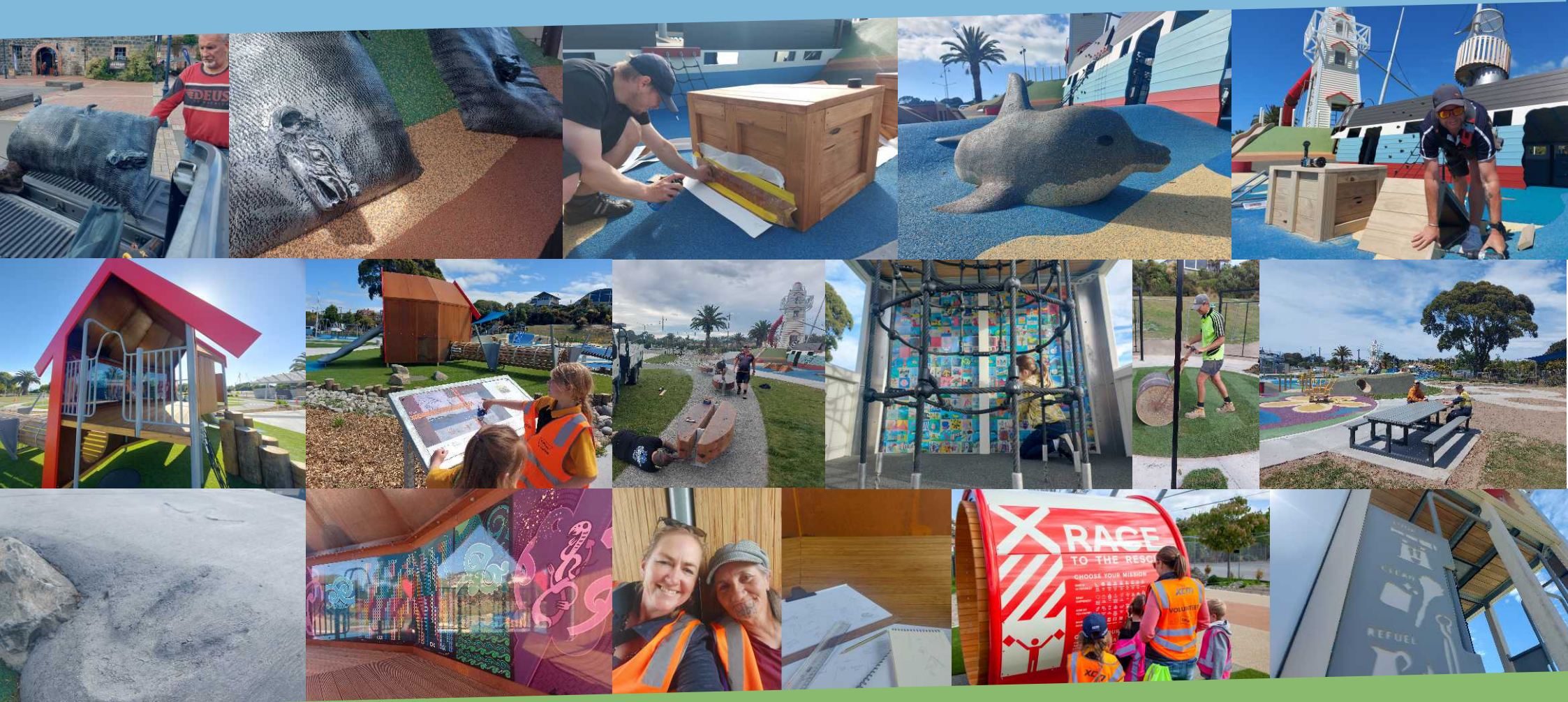
The black rubber was laid in different thicknesses around higher and lower equipment to cushion falls. The colour brought themes and fun, it was also smooth for people using wheel chairs and push chairs.





*Special details
were added to
enhance the story
and themes*

*Artists, architects, students
builders, all worked together
to make special things*





A special powhiri ceremony to bless the playground was held.

Representatives from Arowhenua, Council, Cplay, the contractors, donors and the community came





There was a big party with everyone to celebrate the opening of the new playground, and to thank everyone who helped.





Now the playground is open and lots of people are all playing and having fun together. People are challenging themselves to try harder things and schools are visiting to learn about Caroline Bay.





*And that is how the
playground was built*

